

# Project LITE

Light Inquiry Through Experiments

<http://lite.bu.edu>

## Ambiguous Corner Cube

When viewed from the orientation shown in the photograph below, the "ambiguous corner cube" can be seen to change between three equally plausible perceptual interpretations: a large cube with a smaller cube cut into it; a large cube with a smaller cube jutting out from it; and a large three sided "room" with a cube sitting in its back "corner." The original concept and pattern design was by Fred Duncan, an artist who also devised several highly innovative stereokinetic effect patterns.

### Original References:

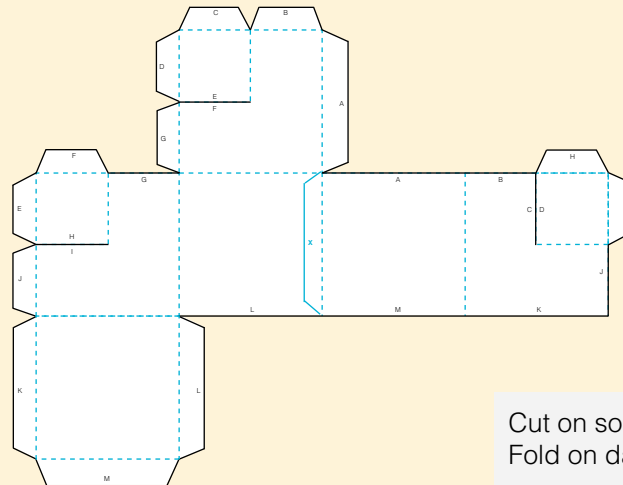
The Ambiguous Corner Cube was first discussed in C. L. Strong's "The Amateur Scientist" column in the November 1974 issue of *Scientific American*, p 126.

### Credits:

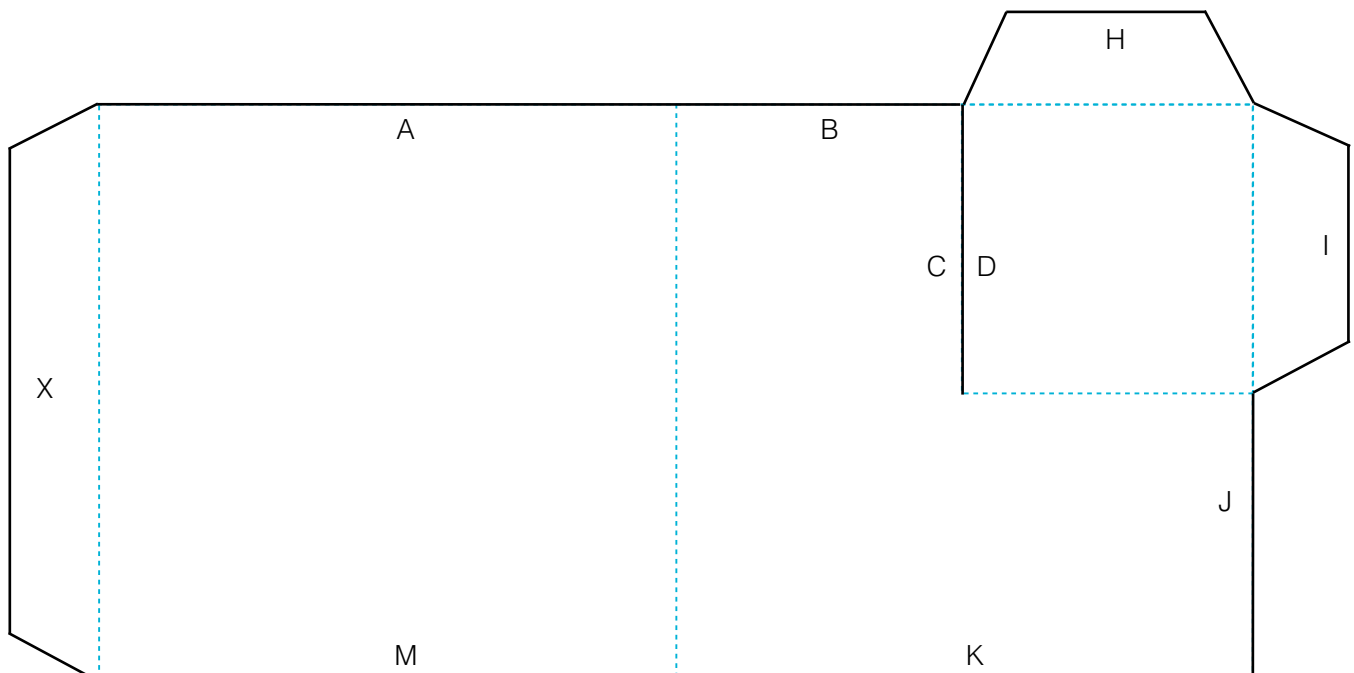
This version of the Corner Cube was designed by K. Brecher and R. Puno (Boston University).  
Project LITE is supported by NSF Grant # DUE - 0715975.

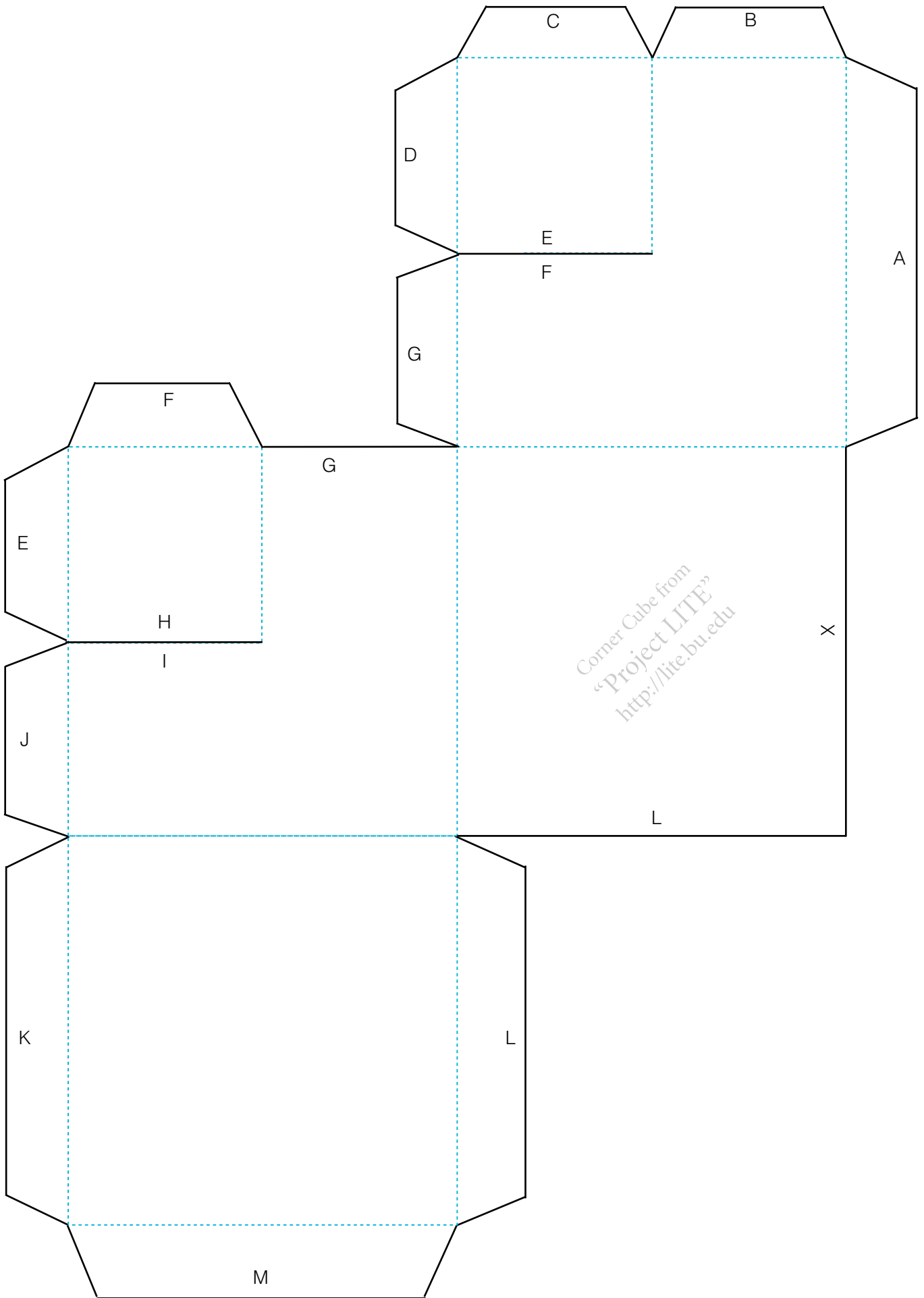
### CONSTRUCTION GUIDE

- 1) Cut out the two patterns along the solid lines.
- 2) Connect the two segments by taping or pasting tab 'X' to the corresponding edge.
- 3) Fold the paper on the dashed lines using a ruler or other hard edge.
- 4) Tape or paste the remaining tabs to their corresponding edge in alphabetical order.



Cut on solid line (———)  
Fold on dashed line (-----)





Corner Cube from  
"Project LITE"  
<http://lite.bu.edu>